

**INSTRUCTIONS
FOR YOUR
NEEDLE
LOCALIZATION**



- * Please do not wear any deodorant or talcum powder the day of the exam.
- * You should refrain from ingesting caffeine several days before the exam (coffee, tea, chocolate and most cola drinks).
- * Wear a two-piece outfit. You will need to undress from the waist up, and this will be more convenient for you.
- * We realize that the compression during your examination may cause some discomfort. This compression is not dangerous to you in any way and allows us to obtain a clearer film with the least amount of radiation. After the exam, you may notice temporary skin discoloration or mild aching because of compression. Aspirin or Tylenol will help relieve this discomfort.

To reorder these brochures, call
GE Medical Systems - Accessories
(800) 472-3666 Fax: (262) 548-2443
gemedicalsystems.com

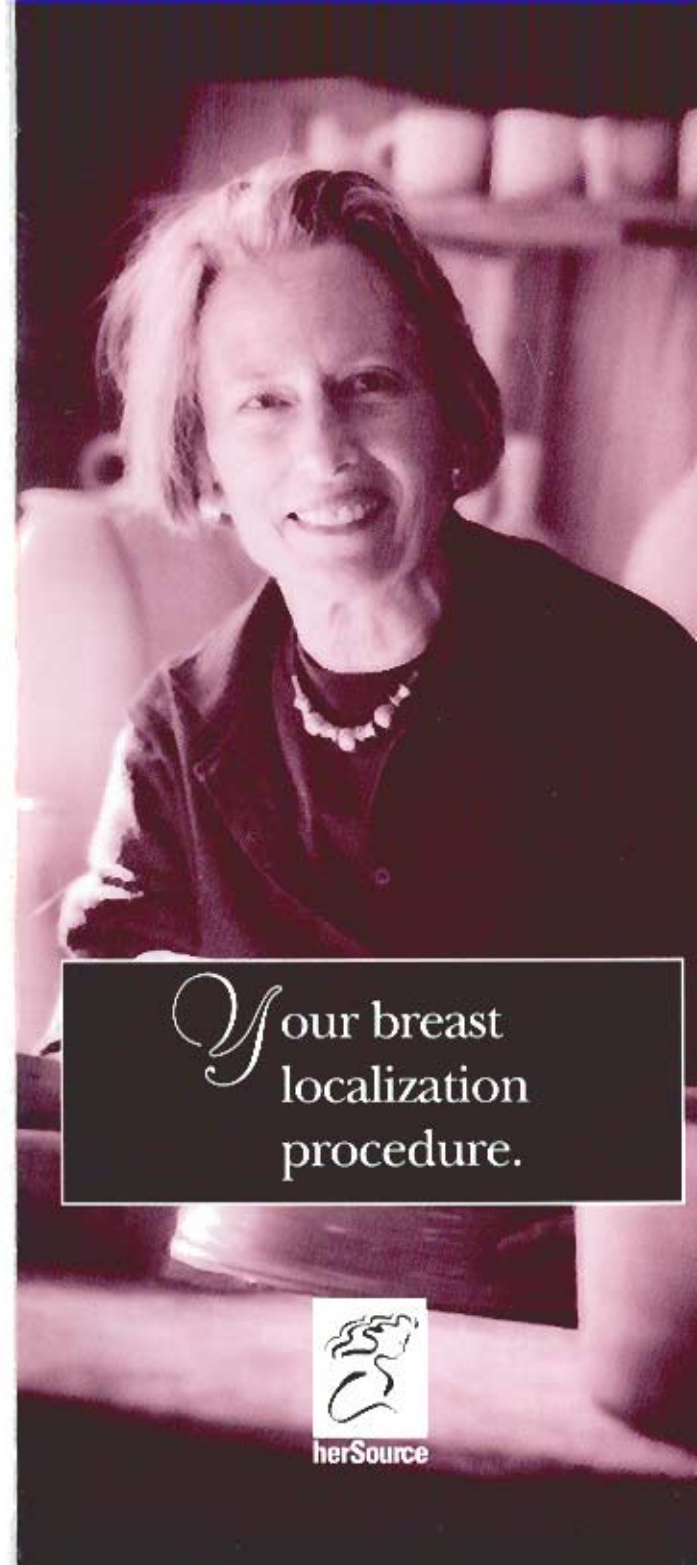


GE Medical Systems

Internet: www.gemedicalsystems.com
GE Medical Systems - Accessories Fax 262 544 3394
P.O. Box 414, Milwaukee, Wisconsin 53201 U.S.A.

© 1995 General Electric Company

E7508A0 10/95 Printed in USA



*Your breast
localization
procedure.*

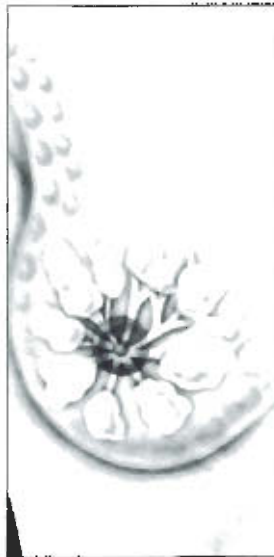


herSource

BREAST LOCALIZATION

Breast localization is a simple procedure; much like a mammogram. The complex structure of the breast can make it difficult to surgically locate the precise area of concern which may have appeared so clearly on your mammogram.

When a mammogram reveals an abnormality in the breast, the most effective way to minimize your risks may be to remove the tissue, and that's why the breast localization procedure was developed.



After the exact location of the area to be localized is established, your breast will be compressed using a specially designed compression plate.

Once proper compression is applied, a needle with a wire will be inserted. The needle may be removed, but the wire will remain in place as a guide for your surgeon. This helps ensure the removal of all abnormal tissue.



STEP ONE

The technologist will take X-rays of your breast, the method being similar to the mammogram. This helps determine the location of the abnormality.



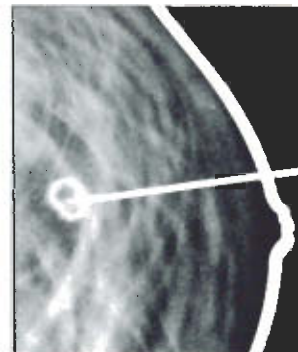
STEP TWO

The radiologist will insert the needle toward the exact position of the area to be localized.



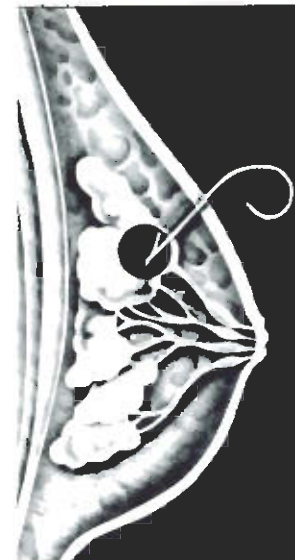
STEP THREE

Another X-ray will be taken to confirm the correct location of the needle.



STEP FOUR

When the needle is correctly in place, a small guide wire will mark the position and the needle may be removed. Two more X-rays will be taken. These will be used by the surgeon to reference the exact location of the wire which marks the area of concern in your breast.



STEP FIVE

When the radiologist is sure the guide wire is accurately placed, the wire will be taped to your skin. You can relax – the breast localization is finished. Your surgeon is now fully prepared to perform surgery.



You can best prepare yourself by reviewing this pamphlet thoroughly and by sharing your questions with your radiologist or technologist. Your understanding is important to them.